



Ulrich's Alaska Update



Lou & Andrea Ulrich
251 Hamilton Road East
Hillsborough, NJ 08844
908-359-8279

SendUlrichsAlaska@gmail.com
SEND International
P O Box 513
Farmington, MI 48332

Praise :

Safe and rewarding
Mission Trip to Thailand
Oct 06

Prayer Requests :

For Upcoming Vision Trip
to Alaska
Jan 12-21, 2007

God's Plan to be
Revealed

Fellowship with
Alaska Missionaries

Safe Travel

Excellent Health

What to Pack

Favorable Weather

Needed Prayer and
Financial Support

*You will make known to me the
path of life...* Ps 16:11

Alaska Bound

Time has really flown by, it seems like yesterday that we were at SEND's Candidate Orientation Program training in June and accepted as Missionary Appointees to Alaska.

In July, we started preparation and training for an October Mission Trip to Thailand that we had committed to lead for our home Church. We spent 2 weeks in Chiang Mai, Thailand helping lay block for a faculty housing building at a Bi-Vocational Training Center for Lahu students. These students learn vocational skills like computer and agriculture as well as Biblical studies.

We are now concentrating on our January Vision Trip to Alaska. Our week long trip will take us first to Petersburg, which is on Mitkof Island midway between Juneau and Ketchikan. Petersburg is a fishing village referred to as "Little Norway" and it is home to SEND's Northern Light Network radio station [KRSA](#).

[KRSR](#) is a 24 hour, 7 days a week, full-service Christian radio station that covers Central Southeast Alaska with a potential audience of 20,000 year-round residents, up to 10,000 seasonal workers, and countless numbers of summer tourists.

From there, we head to Glennallen. Glennallen is about 4 hours from Anchorage and is home to SEND's Alaska Bible College, Cross Road Medical Center, and their second Northern Light Network radio station, [KCAM](#).

As the only local radio station in the Copper River Valley, [KCAM](#) fills a variety of needs ranging from local news, sports and weather, to children's programs, entertainment, financial advice, and family help. Throughout the day Christian programs and music bring the good News of Jesus Christ into homes to encourage believers and evangelize non-believers.

We are excited about meeting with Phil Baur, SEND's Alaska Director, to get his vision for Alaska and for us as we prepare for our ministry with SEND International.

When we return, we will have a clearer picture on how God can use us in Alaska and will keep you informed.

We wish you a very Happy, Healthy, and Safe New Year!

Following His Steps,
Lou & Andrea

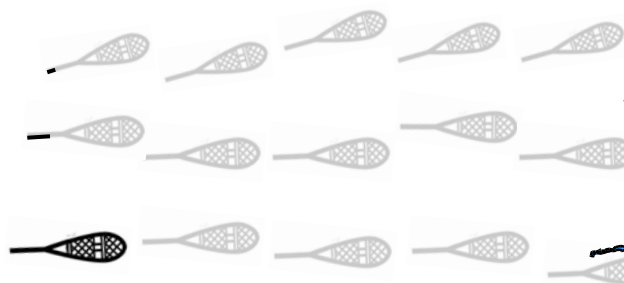
Current Support

Levels:

Monthly:
1%

Outgoing:
3%

Prayer:
20%



Goal:

